

COMPRESSED AIR FILTERS

*The
ULTIMATE in
Compressed Air
Filtration!*

Compressed Air Contamination

Even in today's high-tech world, compressed air remains the primary power source for industry. Because it has many advantages over other types of energy, an increasing number of applications for compressed air are still being discovered.

Unfortunately, compressed air is subject to contamination from the atmosphere and the compressor itself. This results in corrosion and other related problems, which inevitably lead to system and equipment failure.

THE INDUSTRIAL AIR POWER SOLUTION is the ultimate in Compressed Air Filtration! When it comes to keeping compressed air clean and oil-free, no one fits the bill like Industrial Air Power. Our advanced line of Coalescer Filters for Compressed Air Systems offers a rare blend of exceptional performance, proven reliability and uncommon value.

The Industrial Air Power Compressed Air Filter product line covers a full range of products to handle virtually any flow rate and operating condition. Our array of high-efficiency coalescers, particulate/general purpose coalescers, and adsorptive carbon filters offers solutions to virtually all compressed air filtration applications.

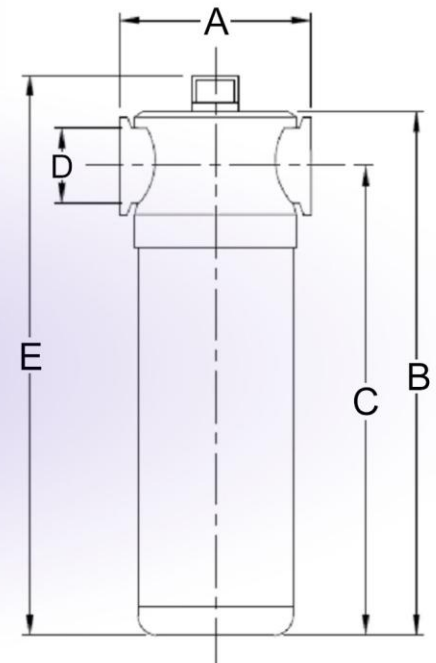


COMPRESSED AIR FILTERS



| Housing Part No. | Connection Size | Flow Rate (cfm) | Pressure (psi) | Housing Dimensions (inches) | | | | | Element (PF/GP/OR/AC) |
|------------------|-----------------|-----------------|----------------|-----------------------------|-------|-------|--------|-------|-----------------------|
| | | | | A | B | C | D | E | |
| CH-60 | 1/2" | 60 | 290 | 4 | 10.12 | 9.28 | 1/2" | 11.98 | CHE-60-XX |
| CH-90 | 3/4" | 90 | 290 | 4.84 | 11.91 | 10.84 | 3/4" | 13.75 | CHE-90-XX |
| CH-120 | 3/4" | 120 | 290 | 4.84 | 14.44 | 13.38 | 3/4" | 16.28 | CHE-120-XX |
| CH-150 | 1" | 150 | 290 | 4.84 | 16 | 14.94 | 1" | 17.86 | CHE-150-XX |
| CH-350 | 1-1/2" | 350 | 290 | 4.84 | 21.18 | 19.75 | 1-1/2" | 23.03 | CHE-350-XX |
| CH-500 | 2" | 500 | 290 | 6.3 | 24.62 | 23 | 2" | 26.48 | CHE-500-XX |
| CH-710 | 2" | 710 | 290 | 6.3 | 27.38 | 25.75 | 2" | 29.25 | CHE-710-XX |
| CH-950 | 2-1/2" | 950 | 232 | 7.64 | 28.75 | 26.46 | 2-1/2" | 30.62 | CHE-950-XX |
| CH-1150 | 3" | 1150 | 232 | 7.64 | 34.25 | 31.98 | 3" | 36.08 | CHE-1150-XX |
| CH-1400 | 3" | 1400 | 232 | 7.64 | 36.38 | 34.12 | 3" | 38.25 | CHE-1400-XX |

| ELEMENT SPECIFICATIONS | | | | |
|----------------------------|--------------|--------------------|----------------|---------------------|
| Grade | PF Prefilter | GP General Purpose | OR Oil Removal | AC Activated Carbon |
| Filter Efficiency (micron) | 5 (micron) | 1 | .01 | .01 |
| Max. Oil Carryover (ppm) | 5 (ppm) | .50 | .01 | .001 |
| Element Color | Green | Blue | Red | Stainless Steel |



For the ultimate in filtration performance, reliability and quality, look to INDUSTRIAL AIR POWER. Filtration excellence for today... and tomorrow!

Notes:

- 1) Grade AC not suited for operation in oil-saturated conditions; typical replacement of grade AC filters is maximum of six months of operation.
- 2) Grade AC filters will not remove Carbon Monoxide or Carbon Dioxide gas.
- 3) Flow rates are based upon standard operating pressure of 100 psi. For flow rates using other than standard pressure, use following correction factors:

CORRECTION FACTOR—Multiply flow rate shown in above table by correction factor corresponding to working pressure:

| | | | | | | | | | | |
|---------------------------|-----|-----|-----|-----|------|------|------|------|------|------|
| Operating Pressure (psig) | 15 | 44 | 73 | 100 | 131 | 160 | 189 | 218 | 247 | 299 |
| Correction Factor | .50 | .71 | .87 | 1 | 1.12 | 1.22 | 1.32 | 1.44 | 1.57 | 1.70 |

- 4) Filters are suitable for all common mineral and synthetic oils.
- 5) Pressure gauge indicators standard for all models except housing number CH-60, which uses a pop-up style indicator.

Request a Quote Now: